

□ **Southern Offices**

Head Office, Harcourt House, Royal Crescent,  
Cheltenham, Gloucestershire. GL50 3DA  
Tel: 01242 707600 Fax: 01242 254342  
E-mail: southern@phigroup.co.uk

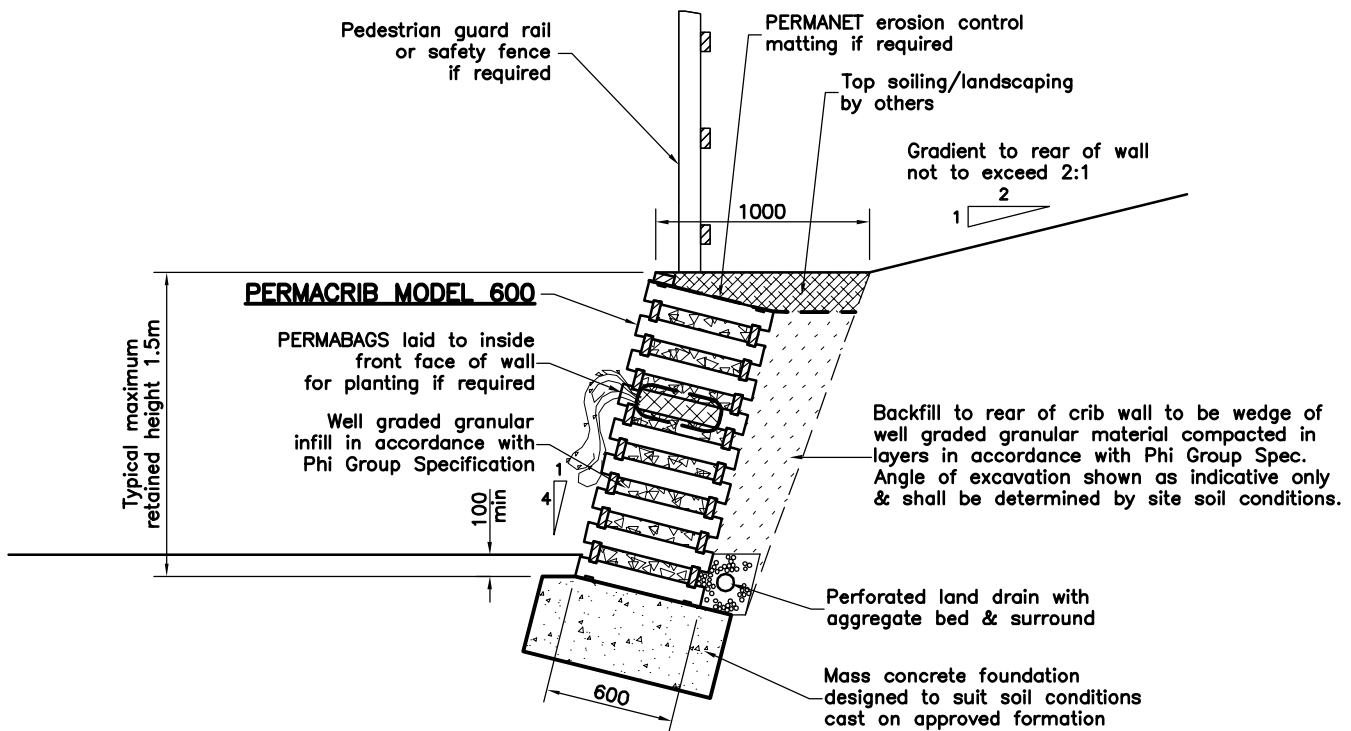
Mereworth Business Centre, Hermitage Oast,  
Danns Lane, Mereworth, Kent ME18 5LW  
Tel: 01622 816780 Fax: 01622 816791  
E-mail: southern@phigroup.co.uk

□ **Northern Office**

Avenue D, Unit 611, Thorp Arch Estate,  
Wetherby, West Yorkshire, LS23 7FS  
Tel: 01937 848320 Fax: 01937 848329  
E-mail: northern@phigroup.co.uk

□ **Scotland Office**

15 Pitreavie Court, Pitreavie Business Park,  
Queensferry Road, Dunfermline, KY11 8UU  
Tel: 01383 749560 Fax: 01383 731642  
E-mail: scotland@phigroup.co.uk



**PLEASE NOTE:**

This diagram is for illustration use ONLY. Exact dimensions and design to be undertaken by Phi Group based on actual design parameters and site requirements



[www.phigroup.co.uk](http://www.phigroup.co.uk)

Title

**TYPICAL SECTION**

Description

**PERMACRIB MODEL 600**

© Phi Group

Copyright of this document is reserved by Phi Group. Copying or transmission of this document in whole or in part or any information contained therein is strictly prohibited without the prior authorisation of Phi Group. Phi Group is a trading division of Keller Limited