

☐ Southern Offices

Head Office, Hadley House, Bayshill Road,  
Cheltenham, Gloucestershire. GL50 3AW  
Tel: 01242 707600 Fax: 01242 254342  
E-mail: southern@phigroup.co.uk

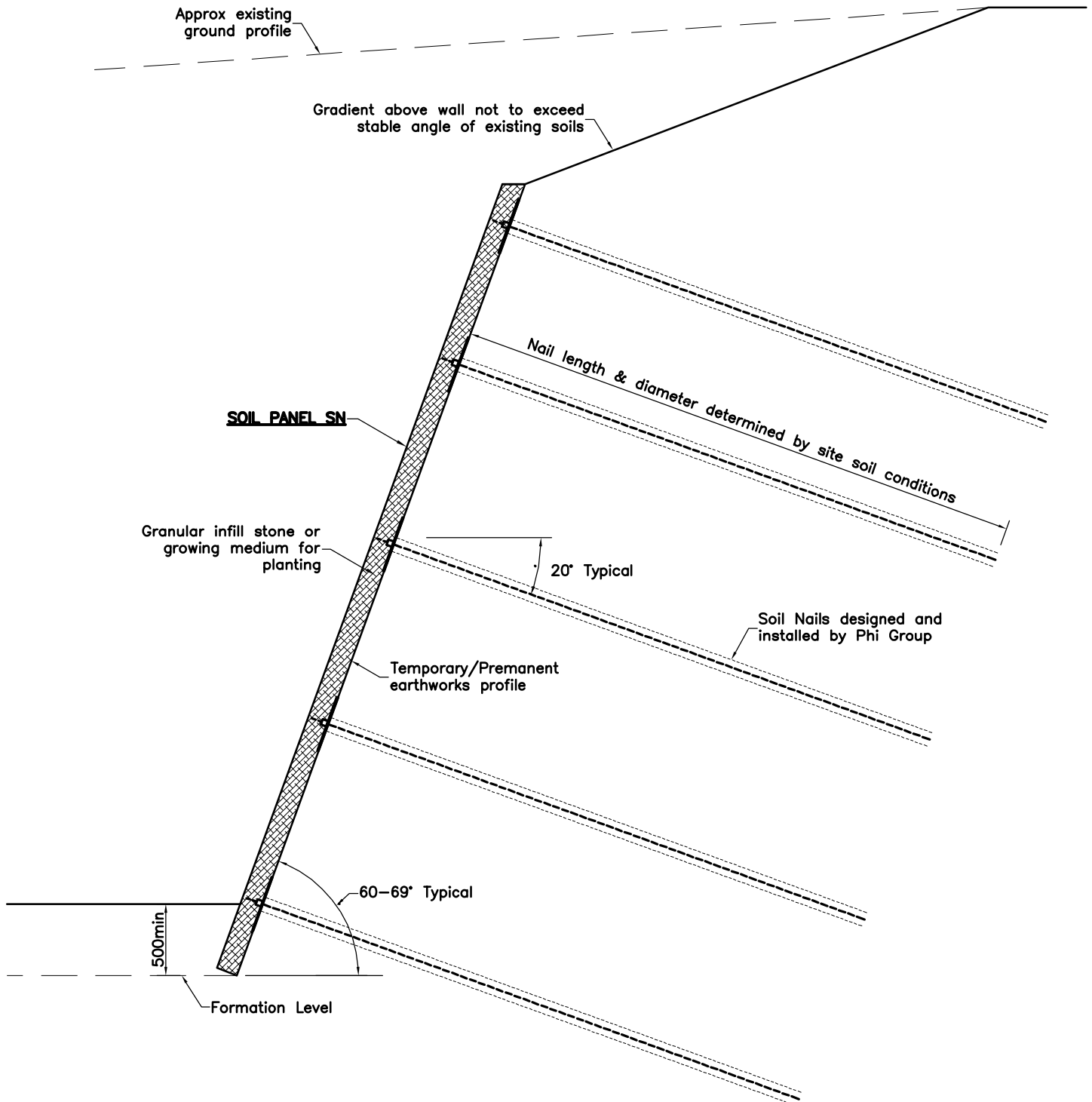
Mereworth Business Centre, Hermitage Oast,  
Danns Lane, Mereworth, Kent ME18 5LW  
Tel: 01622 816780 Fax: 01622 816791  
E-mail: southern@phigroup.co.uk

☐ Northern Office

Templar House, 1 Sandbeck Court, Sandbeck Way,  
Wetherby, LS22 7BA  
Tel: 01937 545111 Fax: 01937 545551  
E-mail: northern@phigroup.co.uk

☐ Scotland Office

15 Pitreavie Court, Pitreavie Business Park,  
Queensferry Road, Dunfermline. KY11 8UU  
Tel: 01383 749560 Fax: 01383 731642  
E-mail: scotland@phigroup.co.uk



**PLEASE NOTE:**

This diagram is for illustration use ONLY.  
Exact dimensions and design to be  
undertaken by Phi Group based on actual  
design parameters and site requirements

[www.phigroup.co.uk](http://www.phigroup.co.uk)

<p>Title</p> <p><b>TYPICAL SECTION</b></p>	<p>© Phi Group Copyright of this document is reserved by Phi Group. Copying or transmission of this document in whole or in part or any information contained therein is strictly prohibited without the prior authorisation of Phi Group. Phi Group is a trading division of Keller Limited</p>
<p>Description</p> <p><b>SOIL PANEL SN</b></p>	